



**Nearly two out of three**  
families are affected by problems  
with alcohol or other drugs.

*Addiction is a disease that is  
chronic, progressive, and often  
accompanied by emotional health  
issues. It can be fatal if left  
untreated. The good news:  
**treatment works!***

*The first step is asking for help.  
If you, or someone you know,  
are struggling with alcohol or  
other drugs, call the POWER Line  
at 412-243-8755.*



#### Our Mission

POWER's mission is to help women reclaim their lives from addiction and related emotional health issues and improve the well-being of future generations.

#### Priority is given to people as follows:

- 1) Pregnant injection drug users
- 2) Pregnant substance users
- 3) Injection drug users
- 4) Overdose survivors
- 5) Veterans



For confidential screening,  
assessment, and referral to treatment,  
call the POWER Line: **412-243-8755**



#### Administrative Office

907 West Street, Second Floor  
Pittsburgh, PA 15221  
412-243-7535 phone  
412-243-8711 fax

[info@power-recovery.com](mailto:info@power-recovery.com)

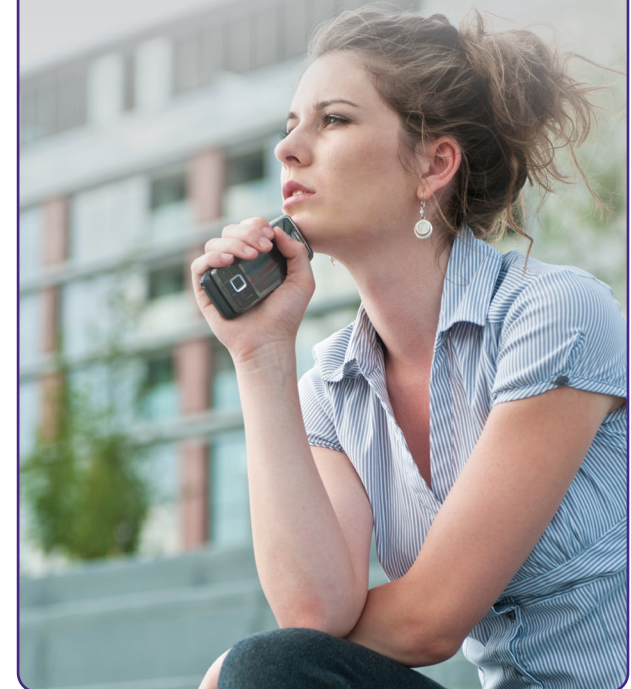
[power-recovery.com](http://power-recovery.com)



## *POWER Line*

An Allegheny County Certified  
Assessment Center providing  
confidential screening,  
assessment, and referral  
to treatment

 *It's your call*





**POWER's mission** is to help women reclaim their lives from addiction and related emotional health issues and improve the well-being of future generations.



## The process

### Screening

This is the first step to getting help. When you call, you will speak with a trained and compassionate intake staff who will complete the screening process over the phone and discuss possible treatment options, including any of POWER's services.

### Assessment

Based on the screening interview, our intake staff may then schedule an appointment for an assessment to determine the right level of care for you. Let our staff know if you prefer an in-home assessment.

### Referral

After a comprehensive assessment, our skilled and caring staff will refer you to treatment that addresses your needs.

### Transition to Care

Once our staff refers you to treatment, whether you select POWER or another option, we will work on your behalf to ensure a smooth transition to care.



## Continuum of Care

In addition to **screening, assessment, and referral to treatment**, POWER offers:

- **Residential substance use disorder treatment** at POWER House
- **Outpatient substance use disorder treatment**, including intensive outpatient (IOP) at POWER New Day
- **Recovery support services**, including mentoring, through the POWER Connection program

We will gladly refer you to one of our treatment programs or any treatment facility of your choice.