



Nearly two out of three

families are affected by problems with alcohol or other drugs.

*Addiction is a disease that is chronic, progressive, and fatal if left untreated. The good news: treatment **works!***

The first step is asking for help. If you, or someone you know, are struggling with alcohol or other drugs, call the POWER Line at 412.243.8755.



POWER shall ensure the availability of preferential treatment to pregnant women.

Priority is given to women as follows:

- (a) pregnant injection-drug users;
- (b) pregnant substance users;
- (c) injection-drug users; and
- (d) all others.



For confidential screening, assessment, and referral to treatment, call the POWER Line: 412.243.8755



Administrative Office
7501 Penn Avenue, Suite 8
Pittsburgh, PA 15208
412.243.7535 phone
412.243.8711 fax

info@power-recovery.com

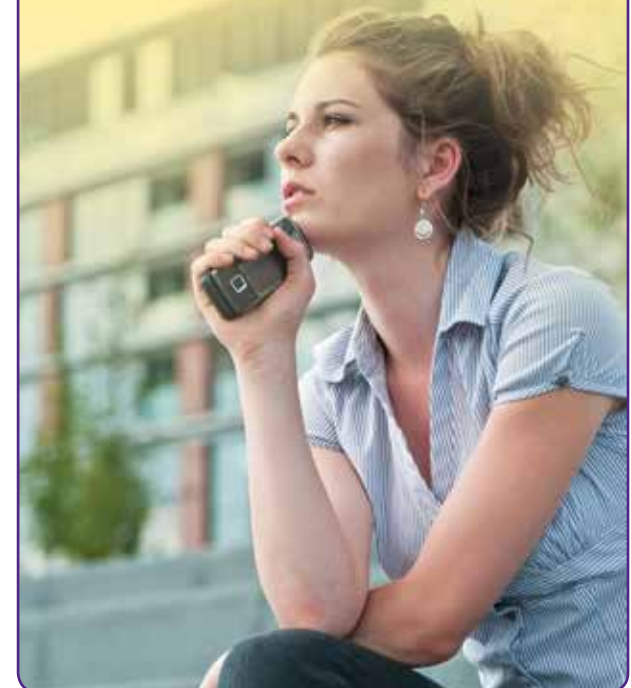
power-recovery.com



Central Intake

Confidential, woman-centered screening, assessment, and referral to drug and alcohol treatment

It's your call





POWER's mission is to help women reclaim their lives from the disease of addiction to alcohol and other drugs, and to reduce the incidence of addiction in future generations.



POWER offers licensed residential and outpatient treatment that is designed exclusively for women with substance use and co-occurring disorders.

We will gladly refer you to one of our treatment programs or any treatment facility of your choice.

The process

Screening

When you call for help, you will speak with POWER's intake staff who will complete the screening process over the phone.

Assessment

Based on the screening interview, our intake staff may schedule an appointment for a thorough drug and alcohol assessment to determine the right level of care for you. If you prefer an in-home assessment, intake staff will be happy to determine your eligibility.

Referral

After a comprehensive assessment, our skilled and caring staff will refer you to treatment that addresses your needs.

Intake

Once our staff refers you to treatment, whether you select POWER or another option, we will work on your behalf to ensure a smooth transition to care.

Ask about insurance and payment options.



Continuum of Care

In addition to screening, assessment, and referral to treatment, POWER offers:

- **Residential drug & alcohol treatment**
- **Outpatient drug & alcohol treatment**, including intensive outpatient (IOP) & partial hospitalization
- **Recovery support services**, including mentoring